

## BHR

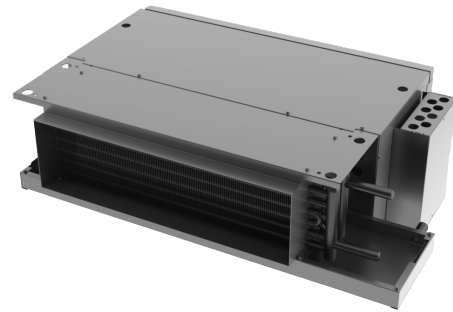
Factory assembled, horizontal blow-thru ducted BHR fan coils are designed for concealed installations above ceilings with ducted return and discharge air and are suitable for projects such as hotels, motels, condominiums and general commercial applications.

### STANDARD FEATURES INCLUDE

- Performance AHRI Certified to Standard 440.
- ETL-Listed. Constructed in compliance with ANSI/UL 1995 Standard.
- All casing sheet metal components fabricated of 18GA G90 galvanized steel.
- Return air plenum thermally and acoustically insulated covering the motor(s)/blower(s) assembly to reduce noise dissipation from the unit.
- High-efficiency 2-row coil suitable for a 2-pipe system.
- Coil manual air vent.
- 1-Inch thick disposable filter.
- Multi-speed motor of the permanent split capacitor (PSC) type.
- Double Width Double Inlet (DWDI) direct driven blowers of the whisper quiet type.
- Controls installed in a single control box suitable for single power supply.
- Single wall condensate pan in galvanized steel, thermally protected on the outside. (Consult Superior Rex for availability).
- 1-Inch discharge air flange.
- 1-Inch return air flange
- Anti-vibration mounts for field installation.

### OPTIONAL FEATURES INCLUDE

- 3-, 4- And 5-row coils for 2-pipe systems.
- Single block 2, 3 and 4 rows CW with 1 row re-heat or pre-heat coils for 4-pipe system applications (5 rows max).
- Single block 2 and 3 rows CW with 2 rows re-heat or pre-heat for 4-pipe system applications (5 rows max).
- Automatic coil air vents.
- LH or RH entry pipe connections.
- Filter option include:
  - ◇ 1-inch high-efficiency pleated filters.
  - ◇ 1-inch washable filters.



BHR

- Bottom or rear return air and filter location.
- Filter supports with slides or clips.
- Filter removal from LH/RH, bottom and rear.
- Cabinet liner in 1/2-inch foil face.
- Motor voltage suitable for 208V, 230V or 277V/1Ph/60Hz power supplies.
- Motor in-line quick disconnect (Not available on bottom return filter).
- Thermostat and Accessories (Refer to the Accessories section for details).
- Single power supply disconnect switch and fuses.
- Automatic 2-pipe changeover switch for heating and cooling applications.
- Electric heaters.
- HW standby electric heater auto changeover switch.
- Valve Packages (Refer to the Accessories section for details).
- Condensate pan options:
  - ◇ Single wall condensate pan manufactured in 20GA 304 Stainless Steel.
  - ◇ Double wall construction consisting of outer and inner skins.
  - ◇ Condensate pan overflow safety switch.
  - ◇ Condensate pan safety overflow connection.

