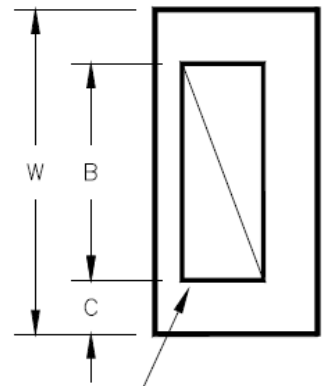
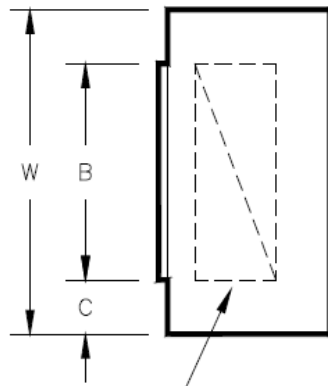
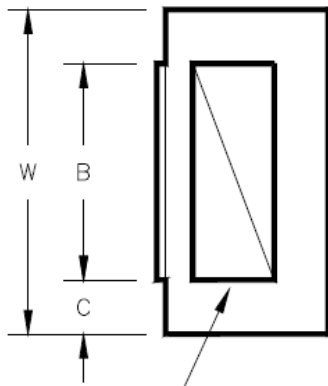
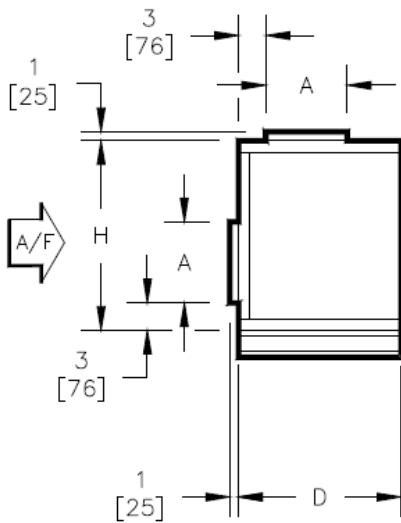


## SBHD & SBVD Standard Mixing Box

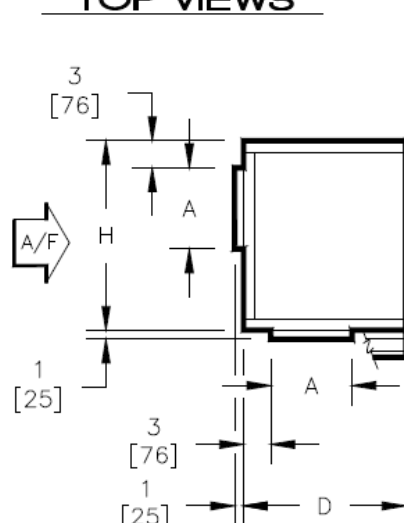
Model SBHD/SBVD Direct Drive Blower Coil Unit Standard Mixing Bow



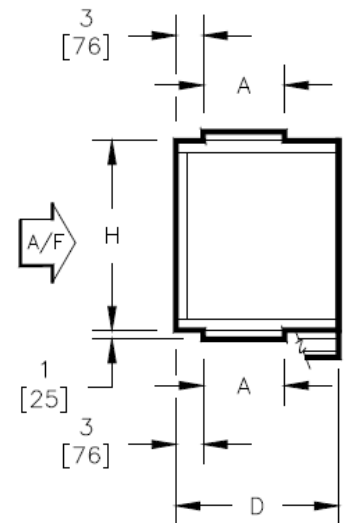
### TOP VIEWS



TOP/REAR INLET



BTM/REAR INLET



TOP/BTM INLET

### SIDE VIEWS

### DIMENSIONS

UNIT MODEL	SIZE	H	W	A	B	C	D
SBHD/SBVD	08	21 [533]	30 [762]	9 [229]	18 [457]	6 [152]	18 [457]
SBHD/SBVD	12	21 [533]	36 [914]	9 [229]	24 [610]	6 [152]	18 [457]
SBHD/SBVD	16	21 [533]	44 [1118]	9 [229]	30 [762]	7 [178]	18 [457]
SBHD	20	22-1/2 [572]	50 [1270]	12 [305]	36 [914]	7 [178]	21 [533]
SBHD	20	21 [533]	50 [1270]	12 [305]	36 [914]	7 [178]	21 [533]
SBHD/SBVD	30	30 [762]	59 [1499]	12 [305]	45 [1143]	7 [178]	21 [533]
SBHD/SBVD	40	30 [762]	68 [1727]	15 [381]	48 [1219]	10 [254]	24 [610]

**Notes:**

- All dimensions are Inches [millimeters]. All dimensions  $\pm 1/4"$  [6mm]. Metric values are soft conversion.
- Damper drive rods are internal, located on both sides of unit.
- Mixing box includes space for standard flat filter rack.
- See drawing BC-SBHD-18.0. Base rails must be used with mixing box.

New	08/04/22	SP	New Release
Revision Date	Version Date	Initiated By	Description