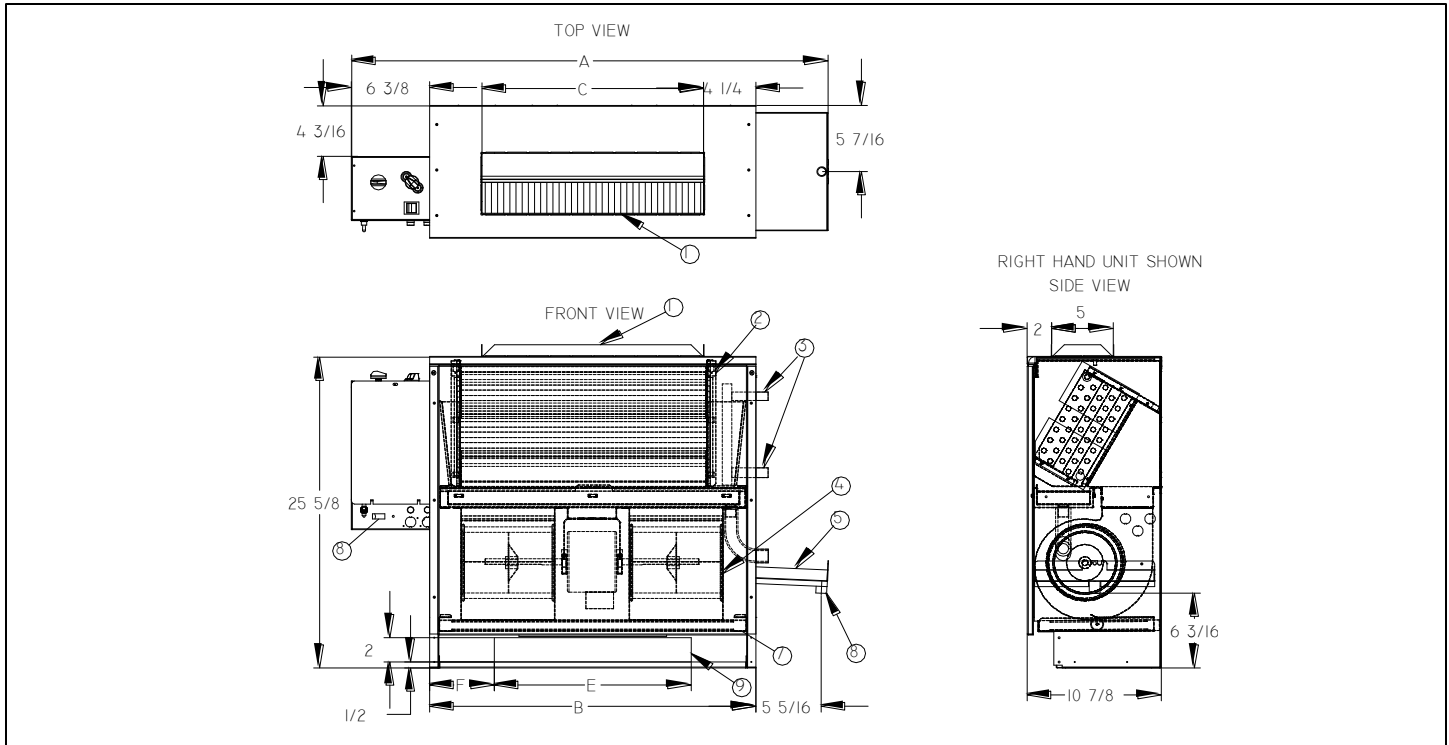


BVR

Vertical Basic Concealed Floor



Model	Dimensions (inches)							Approx. Weight (lb)
	A	B	C	D	E	F	Filter	
BVR02	31 3/4	19 1/2	13	5/8	12	3 3/4	18x10x1	63
BVR03	34 3/4	22 1/2	16	5/8	12	5 1/4	21x10x1	70
BVR04	38 3/4	26 1/2	20	5/8	12	7 1/4	25x10x1	80
BVR06	49 3/4	37 1/2	31	5/8	24	6 3/4	36x10x1	99
BVR08	57 3/4	45 1/2	39	5/8	24	10 3/4	44x10x1	106
BVR10	67 3/4	55 1/2	49	7/8	36	9 3/4	(2) 26x10x1	136
BVR12	77 3/4	65 1/2	59	7/8	36	14 3/4	(2) 31x10x1	150

1. Supply air duct collar = "C"
2. Coil assembly
3. Chilled water connections (supply and return) O.D. = 'D'; Hot water connections = 5/8" O.D.
4. Blower / motor assembly
5. Auxiliary condensate pan
6. Drain connection - 7/8" O.D.
7. Filter
8. Control box
9. Fresh air damper opening (optional) = 2" x "E"
10. Electric heater (optional)

Accessories (Optional)

Check if provided.

Motor Quick Disconnect

Thermostat _____

Control Transformer & Fan Relays

Aquastat Changeover Switch

Manual Damper

Auto Damper

Washable Filter

Leveling Legs

Unit Disconnect Switch

Fuse

Wall Panel

This submittal is meant to demonstrate general dimensions of this product. The drawings are not meant to detail every aspect of the product. Drawings are not to scale. Superior

Rex reserves the right to make changes without written notice.

All rights reserved. No part of this work may be reproduced or transmitted in any form or by any means, electronic or mechanical, including photocopying and recording, or by any information storage retrieval system without permission in writing from Air Distribution Technologies.

Accessories (Optional)

Coil - 3/8" O.D. Copper Tube; 10 Fins/Inch Aluminum, Sine Wave

2-Pipe

- 2-Row (STD.)
 3-Row (STD.)
 4-Row
 5-Row

4-Pipe (Cooling Rows/Heating Rows)

- 2/1-Row
 3/1-Row
 3/2-Row
 4/1-Row

- Chilled Water Cooling
 Hot Water Heating
 Glycol Cooling
 Glycol Heating

Motor

Motor(s) – 3-speed PSC

Standard
115V/60Hz/1ph

Model	HP	Total Amps
BVR02	1/30	0.50
BVR03	1/30	0.50
BVR04	1/20	0.80
BVR06	1/20	0.80
BVR08	1/20	0.80
BVR10	2 x 1/20	2x 0.80
BVR12	2 x 1/20	2x 0.80

Optional:

- 208V/60Hz/1ph
 230V/60Hz/1ph
 277V/60Hz/1ph

Features:

- Automatic Reset
- Thermal Overload Protection System

Electric Heat – Single Phase (Optional)

Heater Voltage

- 115V
 208V
 230V
 277V

		Electric Heater kW Primary or Supplementary			
		115 Volts	208 Volts	230 Volts	277 Volts
Size	Blowers	Min-Max kW	Min-Max kW	Min-Max kW	Min-Max kW
02	1	1-2 kW	1-2 kW	1-2 kW	1-2 kW
03	1	1-3 kW	1-3 kW	1-3 kW	1-3 kW
04	2	1-4 kW	1-4 kW	1-4 kW	1-4 kW
06	2	1-4 kW	1-6 kW	1-6 kW	1-6 kW
08	2	1-4 kW	1-8 kW	1-8 kW	1-8 kW
10	4	2-4 kW	2-8 kW	2-10 kW	2-10 kW
12	4	2-4 kW	2-8 kW	2-10 kW	2-12 kW

Condensate Pan

- Galvanized (STD.)
- Mastic Coating
- Stainless Steel Inner Layer

Description: Inner and Outer Layer of 18 gauge Galvanized Sheet Metal with One - Inch Internal Insulation

Valves and Valve Accessories

- | | |
|--|--|
| <input type="checkbox"/> Shut - Off Valve(s) | <input type="checkbox"/> Strainer(s) |
| <input type="checkbox"/> Shut - Off Valve w/ Memory Stop | <input type="checkbox"/> Manual Flow Control Valve(s) |
| <input type="checkbox"/> 2 - Way Motorized Valve | <input type="checkbox"/> Automatic Flow Control Valve(s) |
| <input type="checkbox"/> 3 - Way Motorized Valve | <input type="checkbox"/> Unions |
| <input type="checkbox"/> 2 - Way Modulating Valve | <input type="checkbox"/> Pete's Plug(s) |

General Description

- This vertical discharge, floor mounted, unit is designed for concealed applications inside a closet or furred-in under window installations in public buildings, schools, hospitals and hotels.
- Exterior fabricated of 18 gauge galvanized steel with 1/2" matte-faced liner for maximum thermal and acoustical insulation.
- Manual air vent.
- Throwaway filter which can be replaced by pulling downward and sliding out on the filter track without having to remove the front panel.
- One inch collar for supply air duct.
- Removable motor/blower assembly mounted on a deck which slides out for easy maintenance.
- System charged with air to insure a leak free arrival at the job site.

This submittal is meant to demonstrate general dimensions of this product. The drawings are not meant to detail every aspect of the product. Drawings are not to scale. Superior Rex reserves the right to make changes without written notice.

All rights reserved. No part of this work may be reproduced or transmitted in any form or by any means, electronic or mechanical, including photocopying and recording, or by any information storage retrieval system without permission in writing from Air Distribution Technologies.